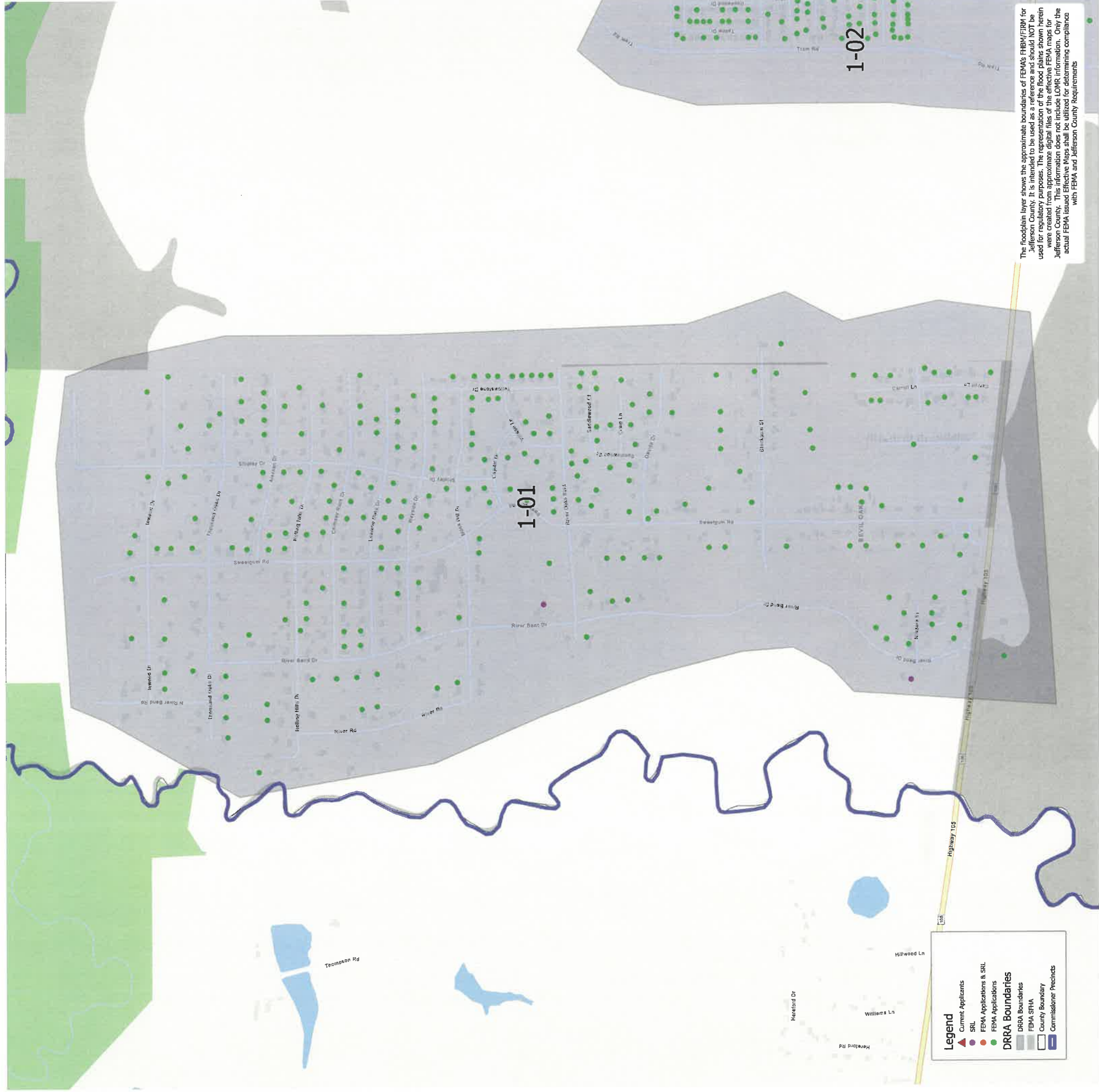


Legend

- Census Blocks
- Current Applicants
- SRL
- FEMA Applications & SRL
- FEMA Applications
- DRRA Boundaries
- FEMA SFHA
- County Boundary
- Commissioner Precincts

The floodplain layer shows the approximate boundaries of FEMA's FIRM/FIRM for Jefferson County. It is intended to be used as a reference and should NOT be used for regulatory purposes. The representation of the flood plains shown herein were created from approximate digital files of the effective FEMA maps for Jefferson County. This information does not include LOMR information. Only the actual FEMA issued Effective Maps shall be utilized for determining compliance with FEMA and Jefferson County Requirements



1-01

1-02

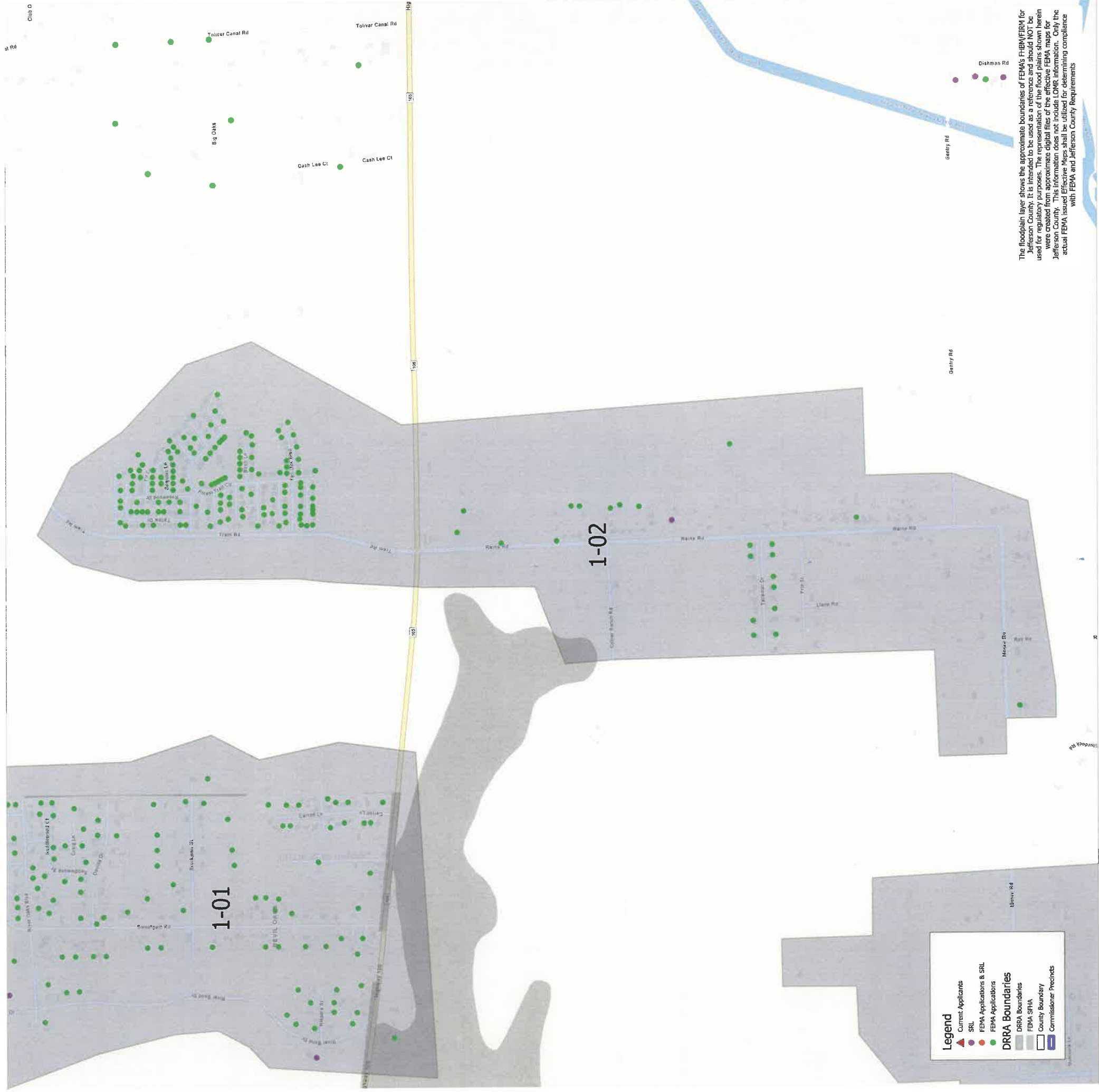
Legend

- ▲ Current Applicants
- SRP
- FEMA Applications & SRP
- FEMA Applications

DRRA Boundaries

- DRRA Boundaries
- FEMA SRHA
- County Boundary
- Commissioner Precincts

The floodplain layer shows the approximate boundaries of FEMA's FIRM/FIRM for Jefferson County. It is intended to be used as a reference and should NOT be used for regulatory purposes. The representation of the flood plains shown herein were created from approximate digital files of the effective FEMA maps for Jefferson County. This information does not include LOMR information. Only the actual FEMA issued Effective Maps shall be utilized for determining compliance with FEMA and Jefferson County Requirements



Club O

1st Rd

Tolivar Canal Rd

Tolivar Canal Rd

Big OHs

Cash Lee Ct

Cash Lee Ct

Dishman Rd

Gentry Rd

Gentry Rd

1-02

1-01

Dishman Rd

Legend

- Current Applicants
- SRL
- FEMA Applications & SRL
- FEMA Applications

DRRA Boundaries

- DRRA Boundaries
- FEMA SFHA
- County Boundary
- Commissioner Precincts



1-03

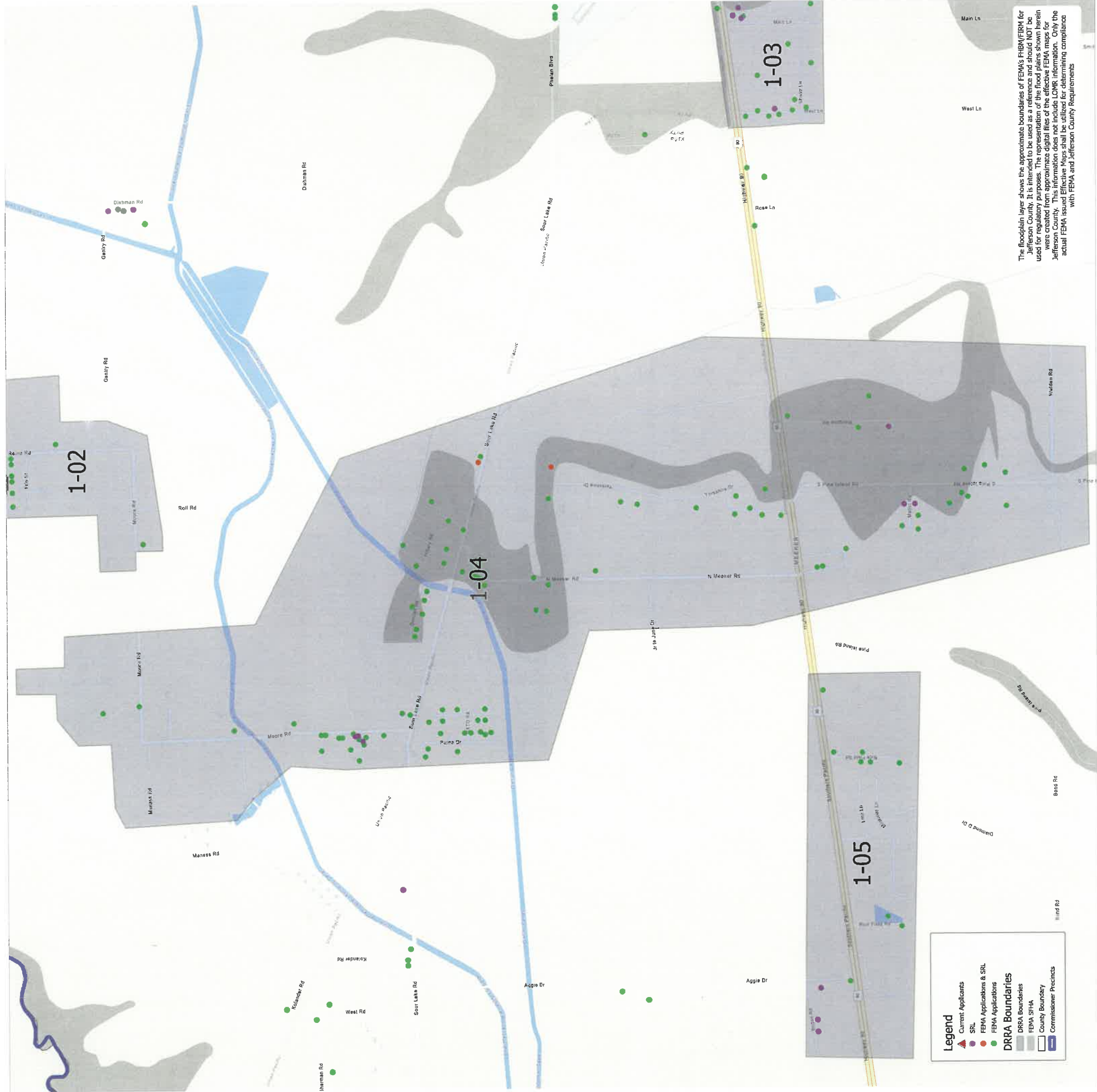
Legend

- Current Applicants
- SRP
- FEMA Applications & SRP
- FEMA Applications

DRRA Boundaries

- DRRA Boundaries
- FEMA SFHA
- County Boundary
- Commissioner Precincts

The floodplain layer shows the approximate boundaries of FEMA's FIRM/FIRM for Jefferson County. It is intended to be used as a reference and should NOT be used for regulatory purposes. The representation of the flood plains shown herein were created from approximate digital files of the effective FEMA maps for Jefferson County. This information does not include LOMR information. Only the actual FEMA issued Effective Maps shall be utilized for determining compliance with FEMA and Jefferson County Requirements



Legend

- ▲ Current Applicants
- FEMA Applications & SRL
- FEMA Applications
- FEMA Applications

DRRA Boundaries

- DRRA Boundaries
- FEMA SFHA
- County Boundary
- Commissioner Precincts

The floodplain layer shows the approximate boundaries of FEMA's FIRM/FIRM for Jefferson County. It is intended to be used as a reference and should NOT be used for regulatory purposes. The representation of the flood plains shown herein were created from approximate digital files of the effective FEMA maps for Jefferson County. This information does not include LOMR information. Only the actual FEMA issued Effective Maps shall be utilized for determining compliance with FEMA and Jefferson County Requirements

1-04

June 19, 2018



1-05

Legend

- ▲ Current Applicants
- FEMA Applications & SRL
- FEMA Applications
- FEMA Applications

DRRA Boundaries

- DRRA Boundaries
- FEMA SFHA
- County Boundary
- Commissioner Precincts

The floodplain layer shows the approximate boundaries of FEMA's FIRM/FIRM for Jefferson County. It is intended to be used as a reference and should NOT be used for regulatory purposes. The representation of the flood plains shown herein were created from approximate digital files of the effective FEMA maps for Jefferson County. This information does not include LOMR information. Only the actual FEMA issued Effective Maps shall be utilized for determining compliance with FEMA and Jefferson County Requirements.





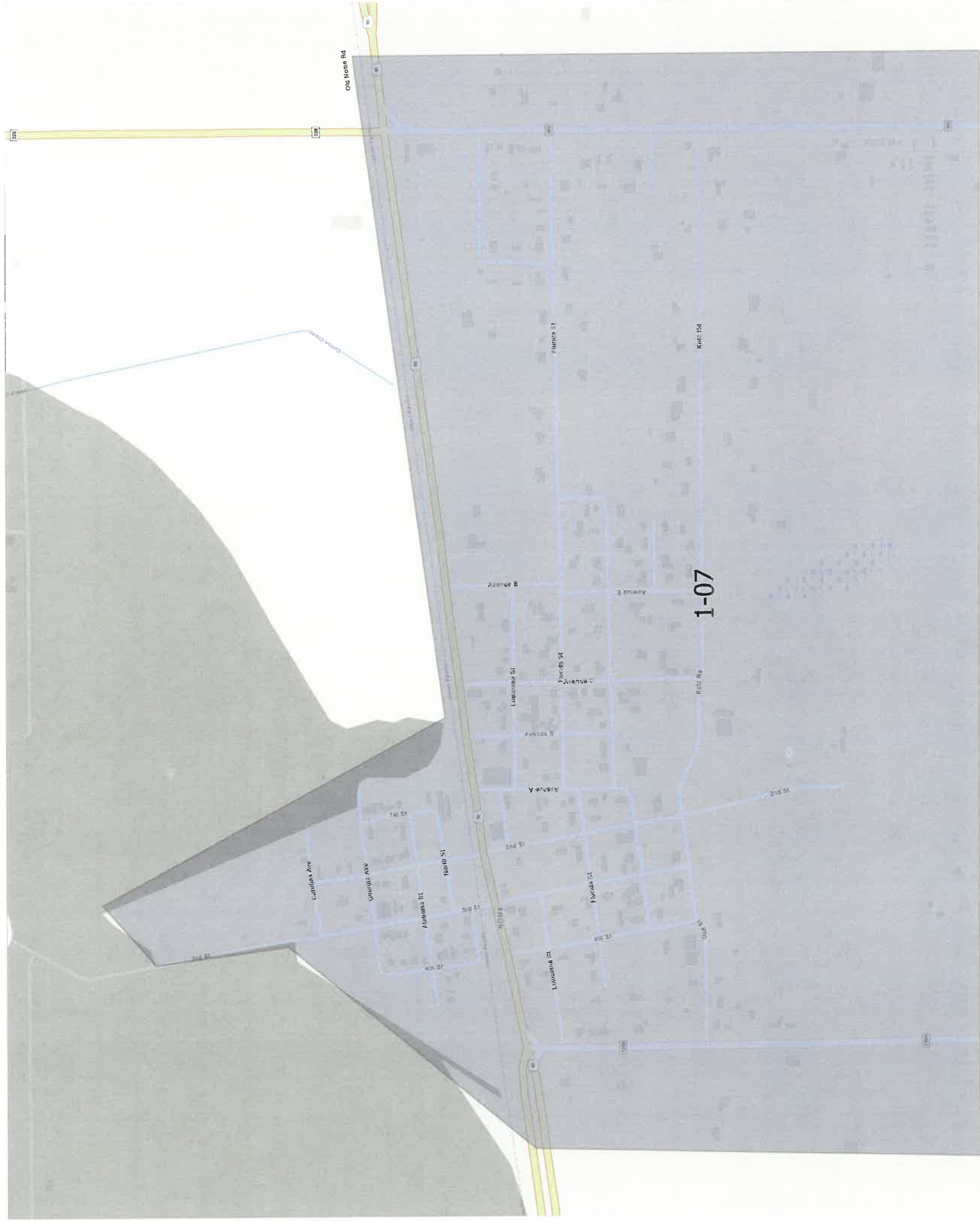
Legend

- ▲ Current Applicants
- SRL
- FEMA Applications & SRL
- FEMA Applications

DRRA Boundaries

- DRRA Boundaries
- FEMA SFHA
- County Boundary
- Commissioner Precincts

The floodplain layer shows the approximate boundaries of FEMA's FIRM/FIRM for Jefferson County. It is intended to be used as a reference and should NOT be used for regulatory purposes. The representation of the flood plains shown herein were created from approximate digital files of the effective FEMA maps for Jefferson County. This information does not include LOMR information. Only the actual FEMA issued Effective Maps shall be utilized for determining compliance with FEMA and Jefferson County Requirements



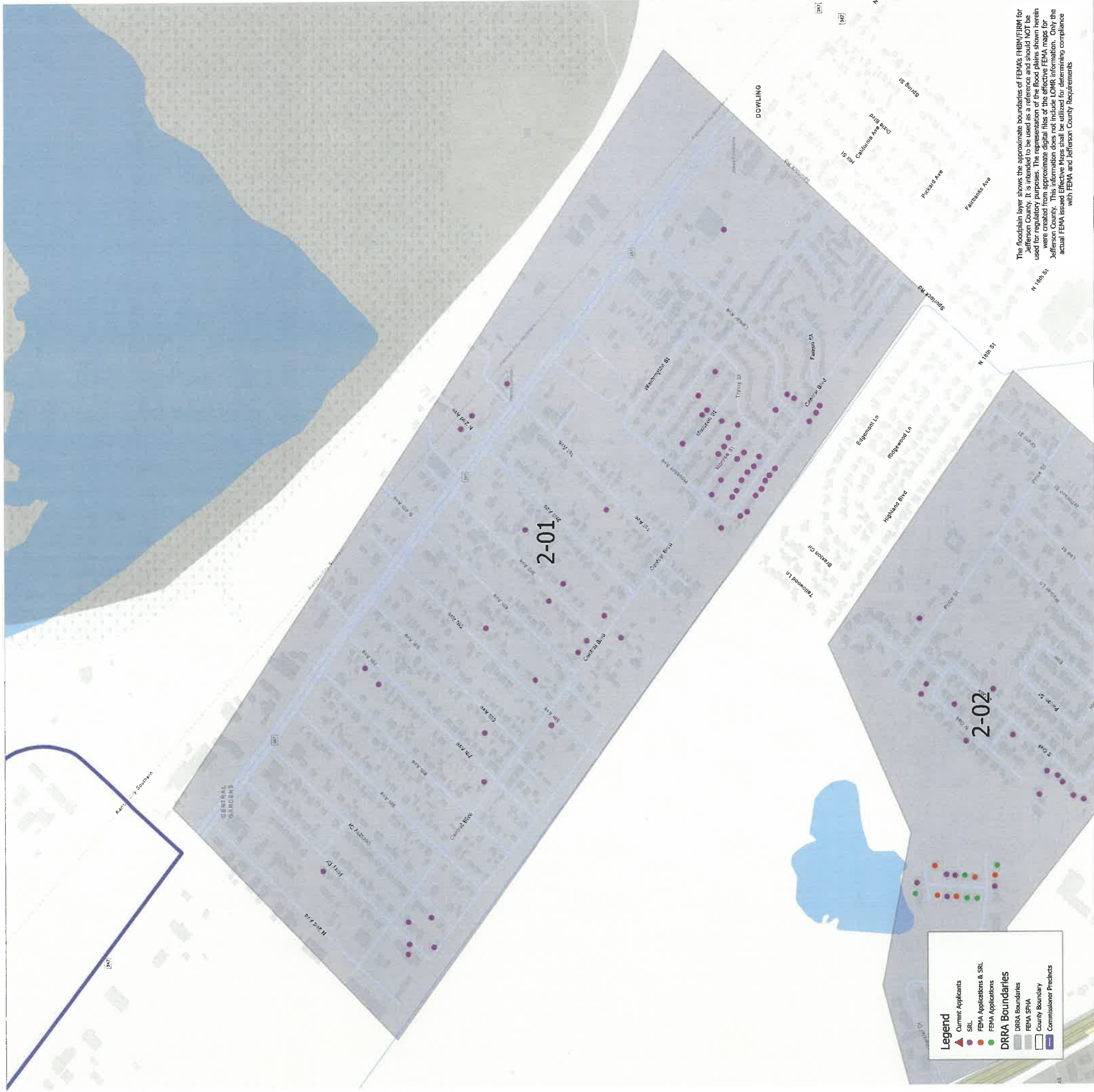
Legend

- Current Applicants
- SRL
- FEMA Applications & SRL
- FEMA Applications

DRRA Boundaries

- DRRA Boundaries
- FEMA SFHA
- County Boundary
- Commissioner Predicts

The floodplain layer shows the approximate boundaries of FEMA's FIRM/FIRM for Jefferson County. It is intended to be used as a reference and should NOT be used for regulatory purposes. The representation of the flood plains shown herein were created from approximate digital files of the effective FEMA maps for Jefferson County. This information does not include LOMR information. Only the actual FEMA issued Effective Maps shall be utilized for determining compliance with FEMA and Jefferson County Requirements.



Legend

- ▲ Current Applicants
- SRL
- FEMA Applications
- FEMA Applications
- DRRA Applications

DRRA Boundaries

- DRRA Boundaries
- FEMA SFHA
- County Boundary
- Commissioner Precincts

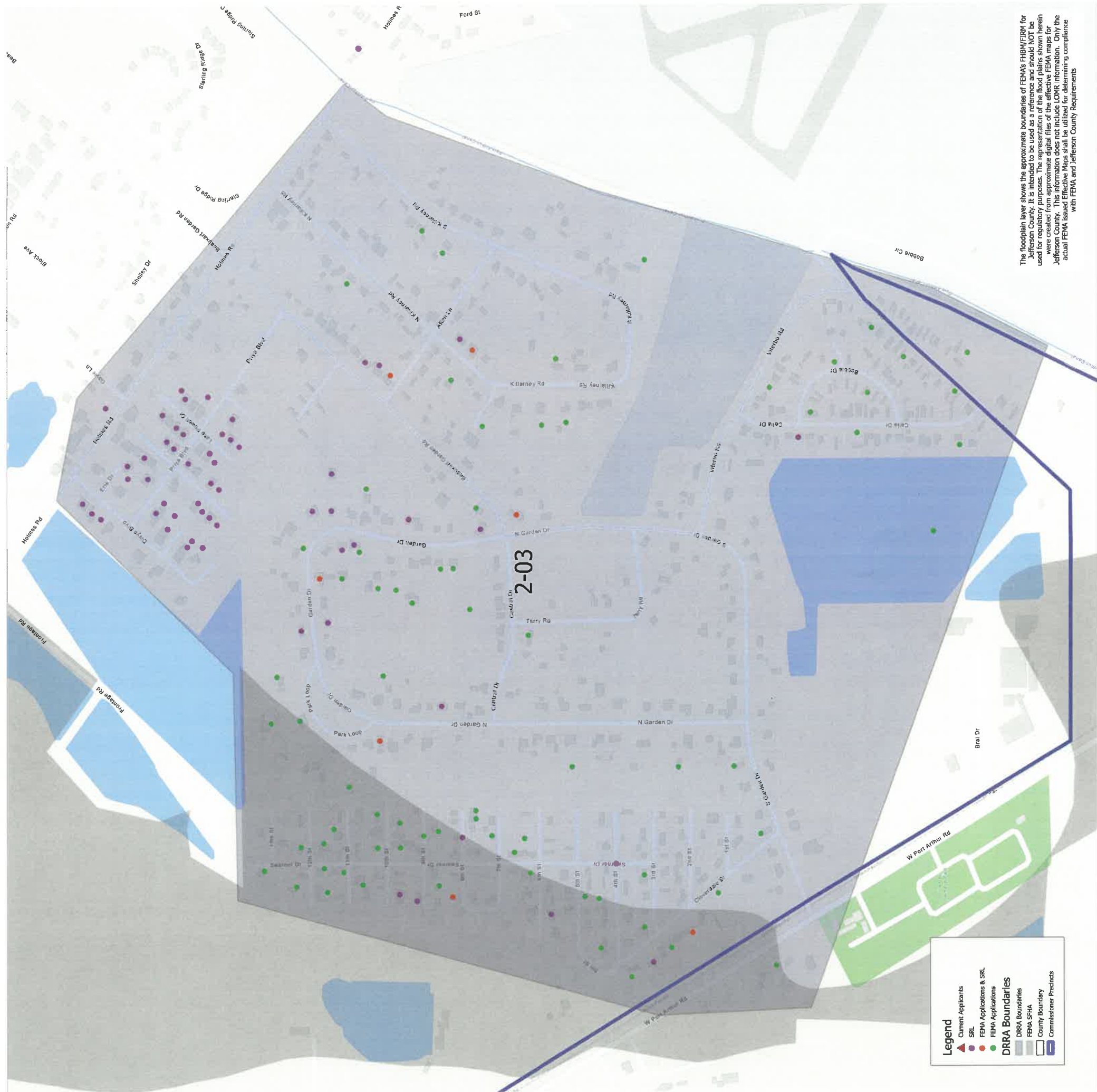
The floodplain layer shows the approximate boundaries of FEMA's FIRM/FIRM for Jefferson County. It is intended to be used as a reference and should NOT be used for regulatory purposes. The representation of the flood plains shown herein were created from approximate digital files of the effective FEMA maps for Jefferson County. This information does not include LOMR information. Only the actual FEMA issued Effective Maps shall be utilized for determining compliance with FEMA and Jefferson County Requirements



Legend

- Current Applicants
- SRL
- FEMA Applications & SRL
- FEMA Applications
- DRRA Boundaries
- DRRA Boundaries
- FEMA SFHA
- County Boundary
- Commissioner Precincts

The floodplain layer shows the approximate boundaries of FEMA's FIRM/FIRM for Jefferson County. It is intended to be used as a reference and should NOT be used for regulatory purposes. The representation of the flood plains shown herein were created from approximate digital files of the effective FEMA maps for Jefferson County. This information does not include LOMR information. Only the actual FEMA issued Effective Maps shall be utilized for determining compliance with FEMA and Jefferson County Requirements

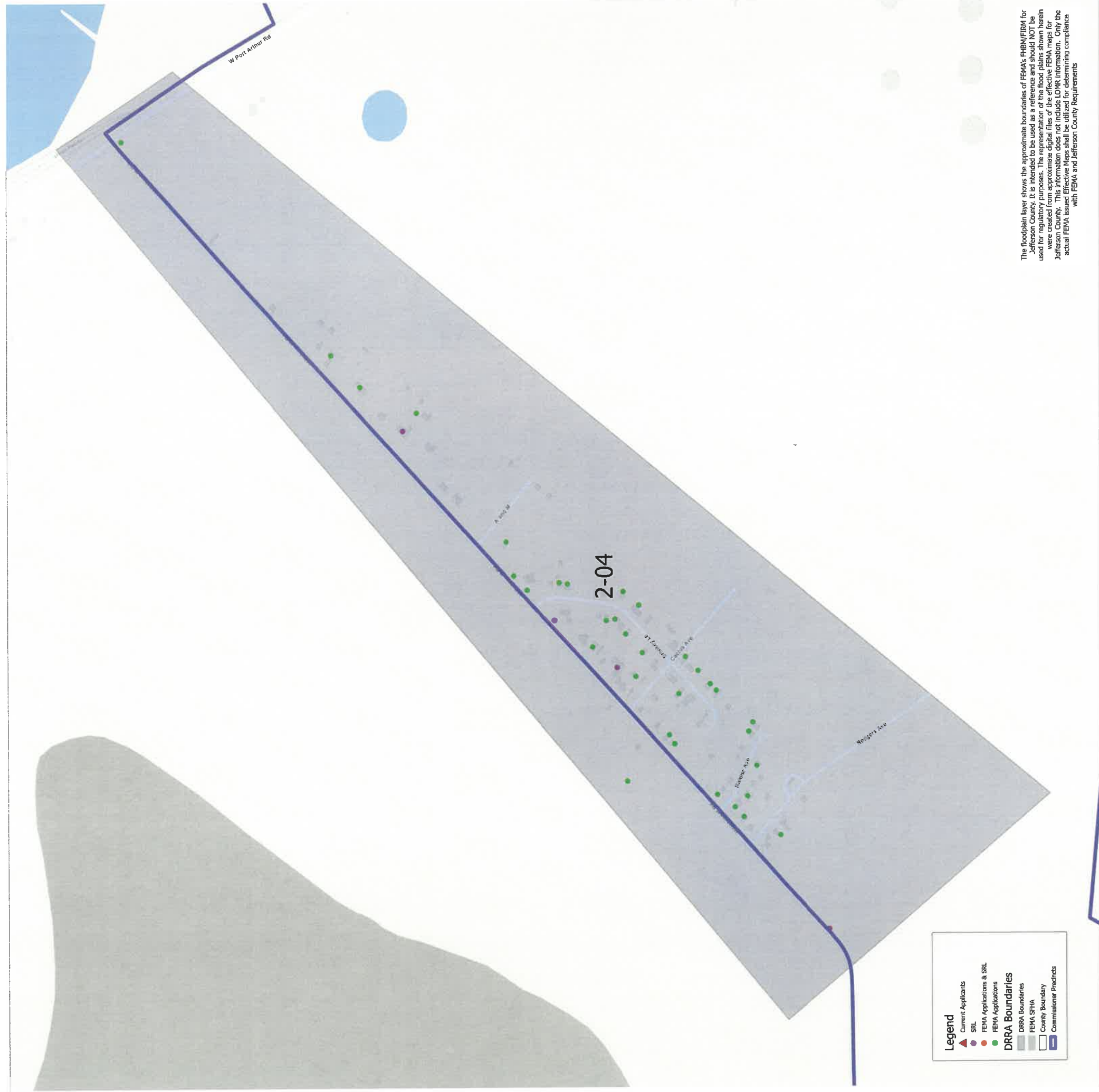


Legend

- Current Applicants
- SRL
- FEMA Applications & SRL
- FEMA Applications
- DRRA Boundaries**
- DRRA Boundaries
- FEMA SFHA
- County Boundary
- Commissioner Precincts

2-03

The floodplain layer shows the approximate boundaries of FEMA's FIRM/FIRM for Jefferson County. It is intended to be used as a reference and should NOT be used for regulatory purposes. The representation of the flood plains shown herein were created from approximate digital files of the effective FEMA maps for Jefferson County. This information does not include LOMR information. Only the actual FEMA issued Effective Maps shall be utilized for determining compliance with FEMA and Jefferson County Requirements



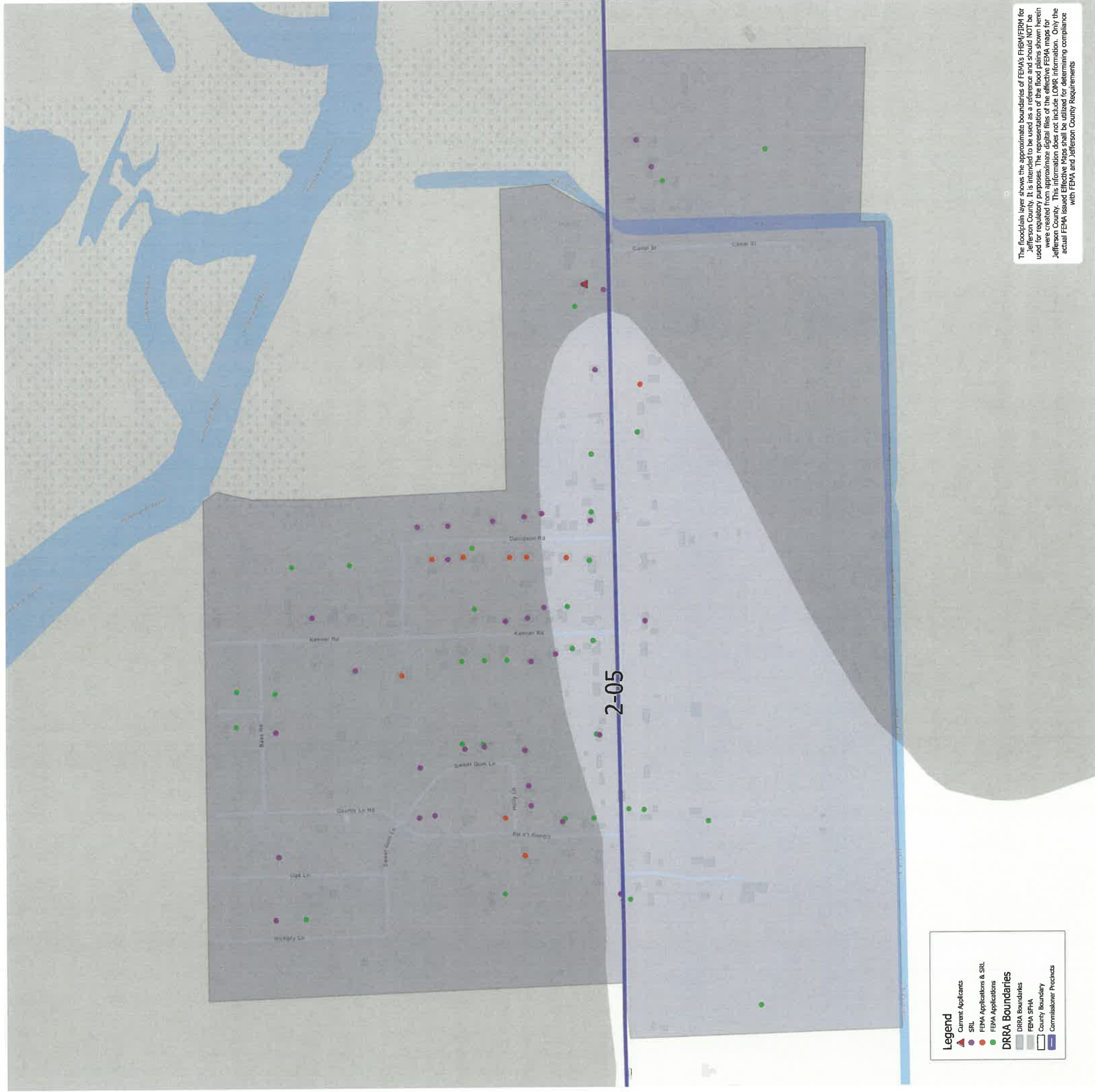
Legend

- ▲ Current Applicants
- SRL
- FEMA Applications & SRL
- FEMA Applications

DRRA Boundaries

- DRRA Boundaries
- FEMA SFHA
- County Boundary
- Commissioner Precincts

The floodplain layer shows the approximate boundaries of FEMA's FIRM/FIRM for Jefferson County. It is intended to be used as a reference and should NOT be used for regulatory purposes. The representation of the flood plains shown herein were created from approximate digital files of the effective FEMA maps for Jefferson County. This information does not include LOMK information. Only the actual FEMA issued Effective Maps shall be utilized for determining compliance with FEMA and Jefferson County Requirements



Legend

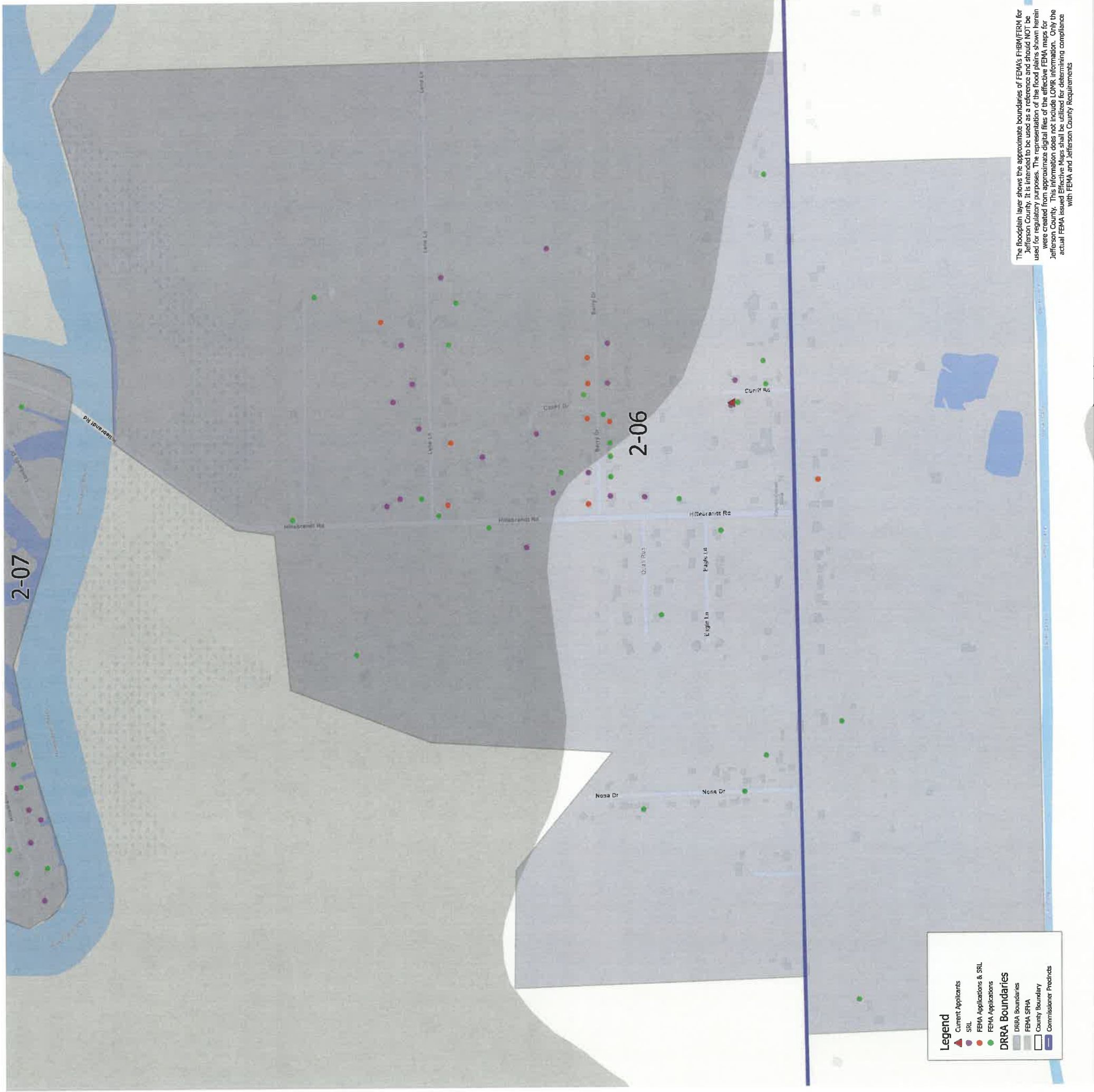
- ▲ Current Applicants
- SRL
- FEMA Applications & SRL
- FEMA Applications

DRRA Boundaries

- DRRA Boundaries
- FEMA SFHA
- County Boundary
- Commissioner Precincts

The floodplain layer shows the approximate boundaries of FEMA's FIRM/FIRM for Jefferson County. It is intended to be used as a reference and should NOT be used for regulatory purposes. The representation of the flood plains shown herein were created from approximate digital files of the effective FEMA maps for Jefferson County. This information does not include LOMR information. Only the actual FEMA issued Effective Maps shall be utilized for determining compliance with FEMA and Jefferson County Requirements

2-05



Legend

- Current Applicants
- SRL
- DRRA Applications & SRL
- DRRA Applications
- FEMA Applications

DRRA Boundaries

- DRRA Boundaries
- FEMA SFHA
- County Boundary
- Commissioner Precincts

The floodplain layer shows the approximate boundaries of FEMA's FIRM/FIRM for Jefferson County. It is intended to be used as a reference and should NOT be used for regulatory purposes. The representation of the flood plains shown herein were created from approximate digital files of the effective FEMA maps for Jefferson County. This information does not include LOMR information. Only the actual FEMA issued Effective Maps shall be utilized for determining compliance with FEMA and Jefferson County Requirements



Legend

- ▲ Current Applicants
- SRL
- FEMA Applications & SRL
- FEMA Applications
- DRRRA Applications

DRRA Boundaries

- DRRA Boundaries
- FEMA SFHA
- County Boundary
- Commissioner Precincts

The floodplain layer shows the approximate boundaries of FEMA's FIRM/FIRM for Jefferson County. It is intended to be used as a reference and should NOT be used for regulatory purposes. The representation of the flood plains shown herein were created from approximate digital files of the effective FEMA maps for Jefferson County. This information does not include LOMR information. Only the actual FEMA issued Effective Maps shall be utilized for determining compliance with FEMA and Jefferson County Requirements

2-07



Legend

- ▲ Current Applicants
- SRL
- FEMA Applications & SRL
- FEMA Applications
- DRRR Boundaries**
- DRRR Boundaries
- FEMA SFHA
- County Boundary
- Commissioner Precincts

The floodplain layer shows the approximate boundaries of FEMA's FIRM/FIRM for Jefferson County. It is intended to be used as a reference and should NOT be used for regulatory purposes. The representation of the flood plains shown herein were created from approximate digital files of the effective FEMA maps for Jefferson County. This information does not include LOMR information. Only the actual FEMA issued Effective Maps shall be utilized for determining compliance with FEMA and Jefferson County Requirements.



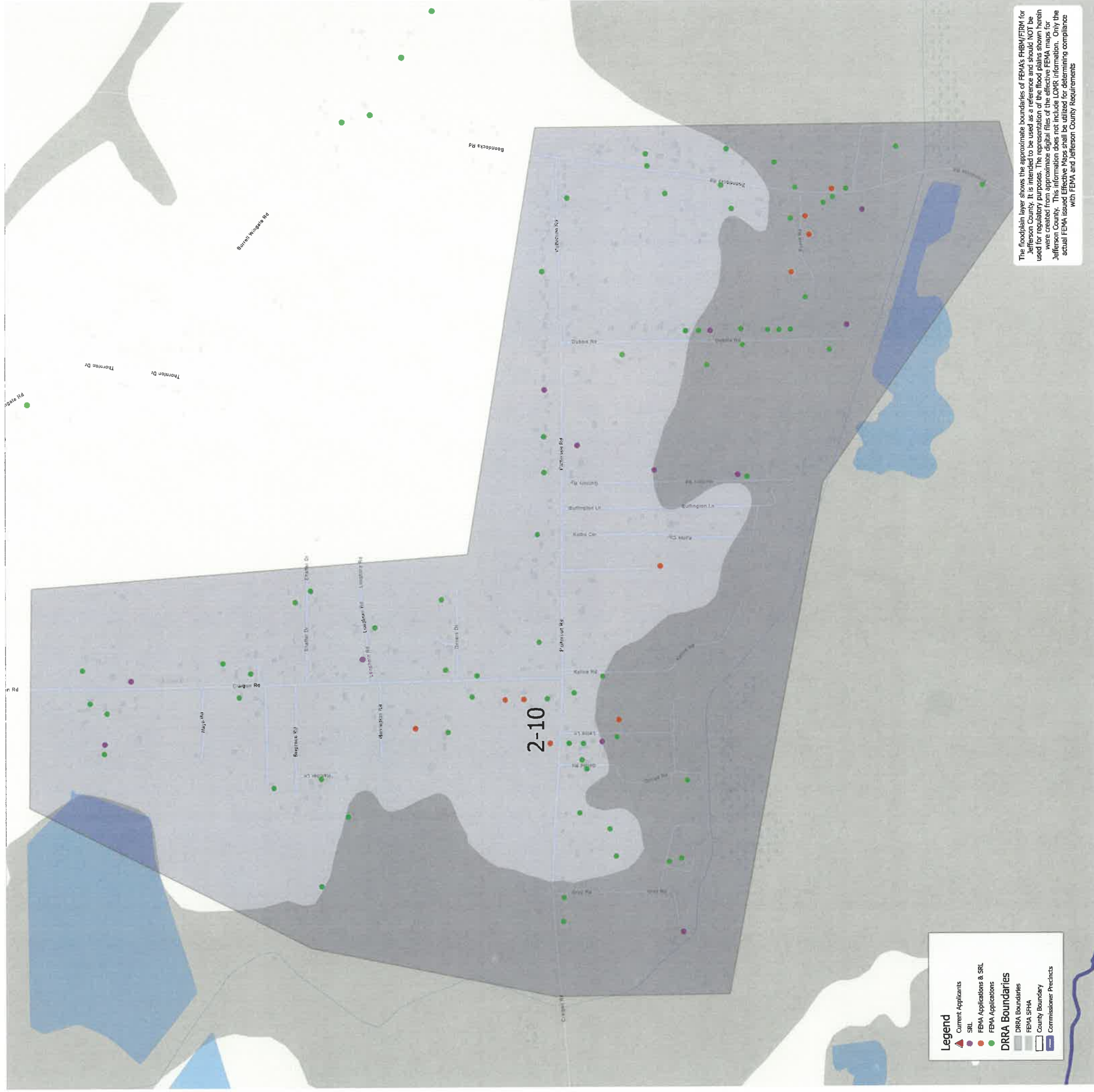
Legend

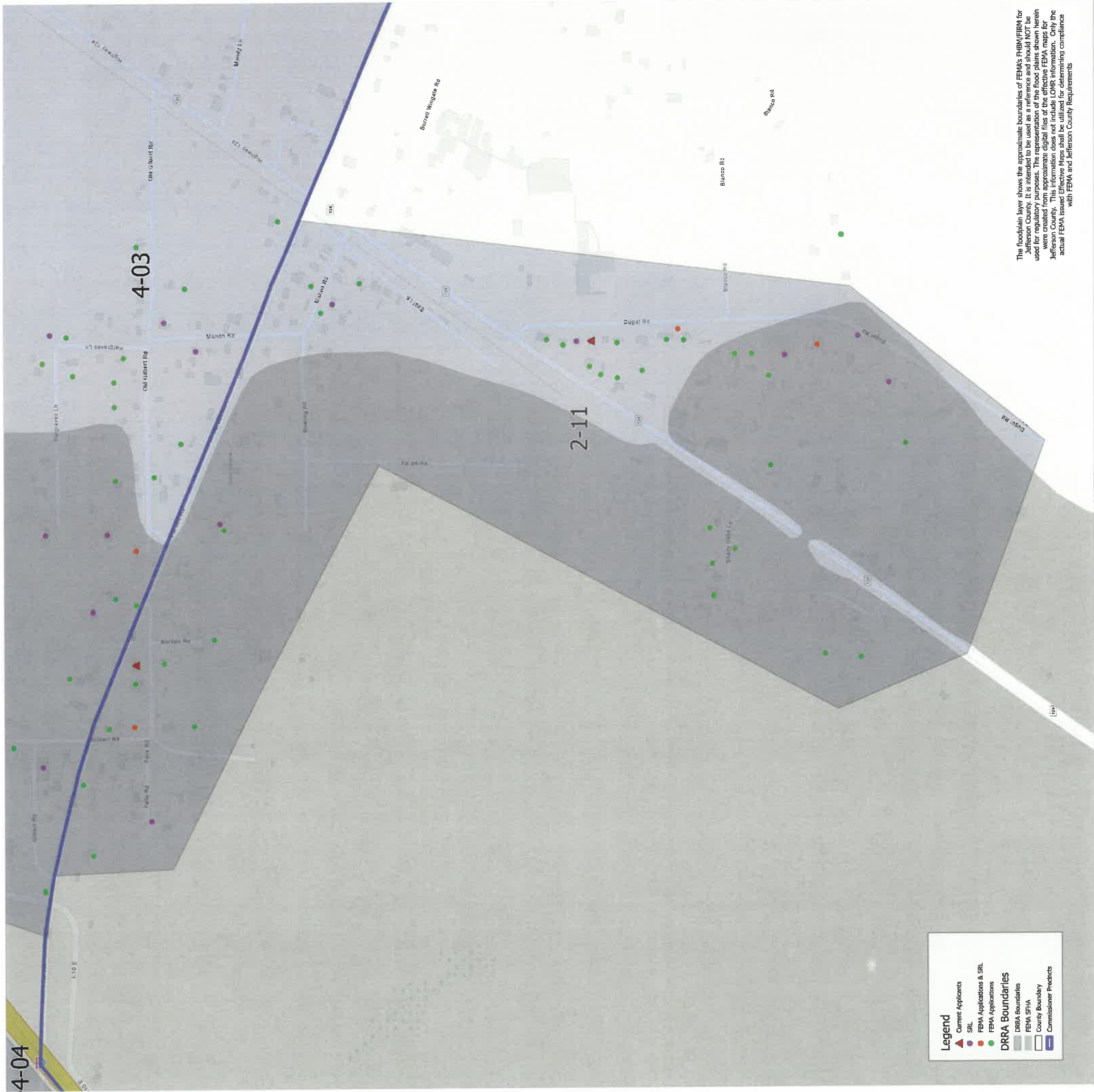
- ▲ Current Applicants
- SRL
- FEMA Applications & SRL
- FEMA Applications

DRRA Boundaries

- DRRA Boundaries
- FEMA SFHA
- County Boundary
- Commissioner Precincts

The floodplain layer shows the approximate boundaries of FEMA's FIRM/FIRM for Jefferson County. It is intended to be used as a reference and should NOT be used for regulatory purposes. The representation of the flood plains shown herein were created from approximate digital files of the effective FEMA maps for Jefferson County. This information does not include LOMR information. Only the actual FEMA issued Effective Maps shall be utilized for determining compliance with FEMA and Jefferson County Requirements.





Legend

- ▲ Current Applicants
- SRL
- FEMA Applications & SRL
- FEMA Applications
- FEMA Applications

DRRA Boundaries

- DRRA Boundaries
- FEMA SFHA
- County Boundary
- Commissioner Predicts

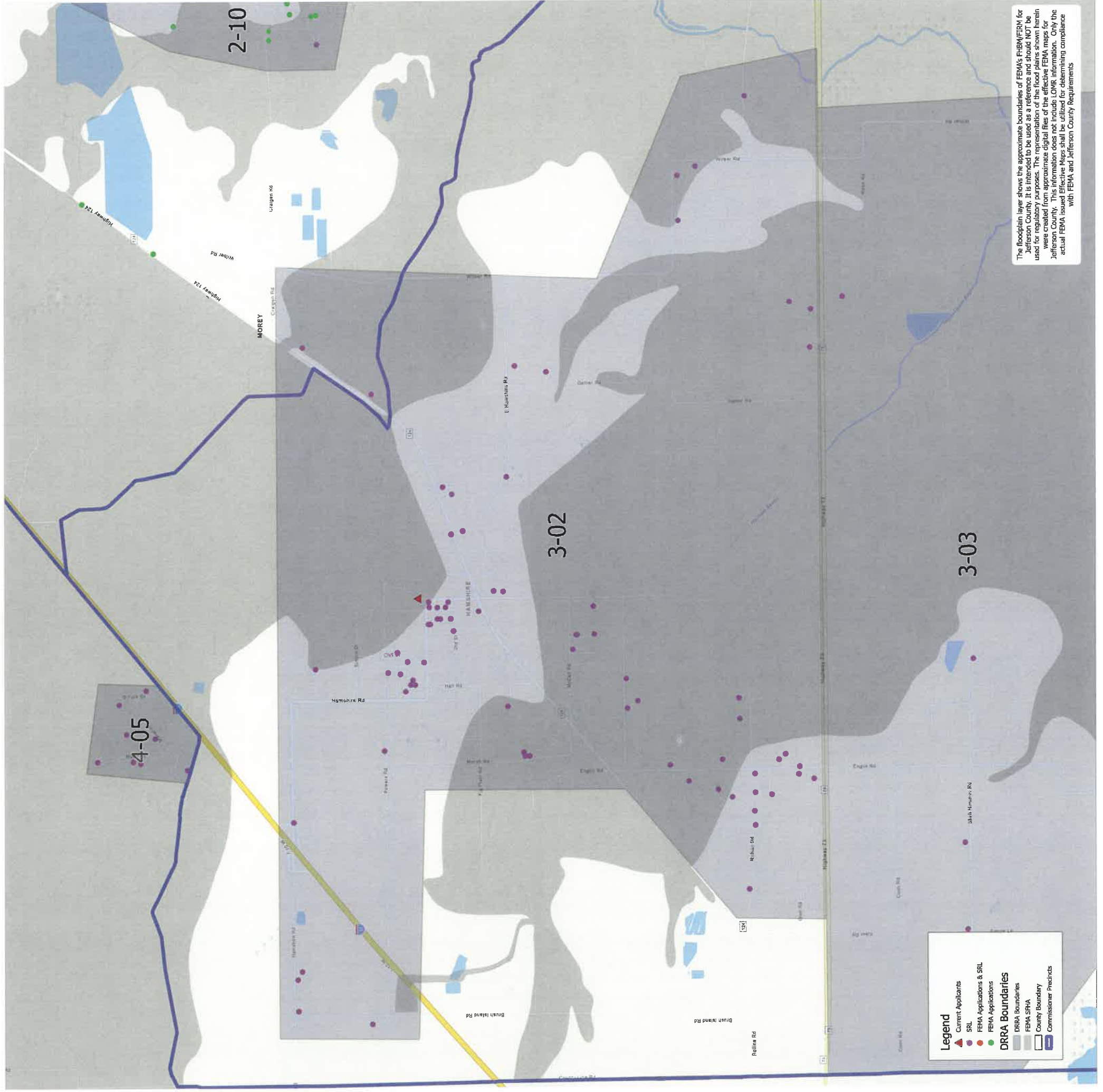
The floodplain layer shows the approximate boundaries of FEMA's FIRM/FIRM for Jefferson County. It is intended to be used as a reference and should NOT be used for regulatory purposes. The representation of the flood plains shown herein were created from approximate digital files of the effective FEMA maps for Jefferson County. This information does not include LOMR information. Only the actual FEMA issued Effective Maps shall be utilized for determining compliance with FEMA and Jefferson County Requirements



Legend

- ▲ Current Applicants
- SRL
- FEMA Applications & SRL
- FEMA Applications
- DRRR Boundaries
- DRRA Boundaries
- FEMA SFHA
- County Boundary
- Commissioner Precincts

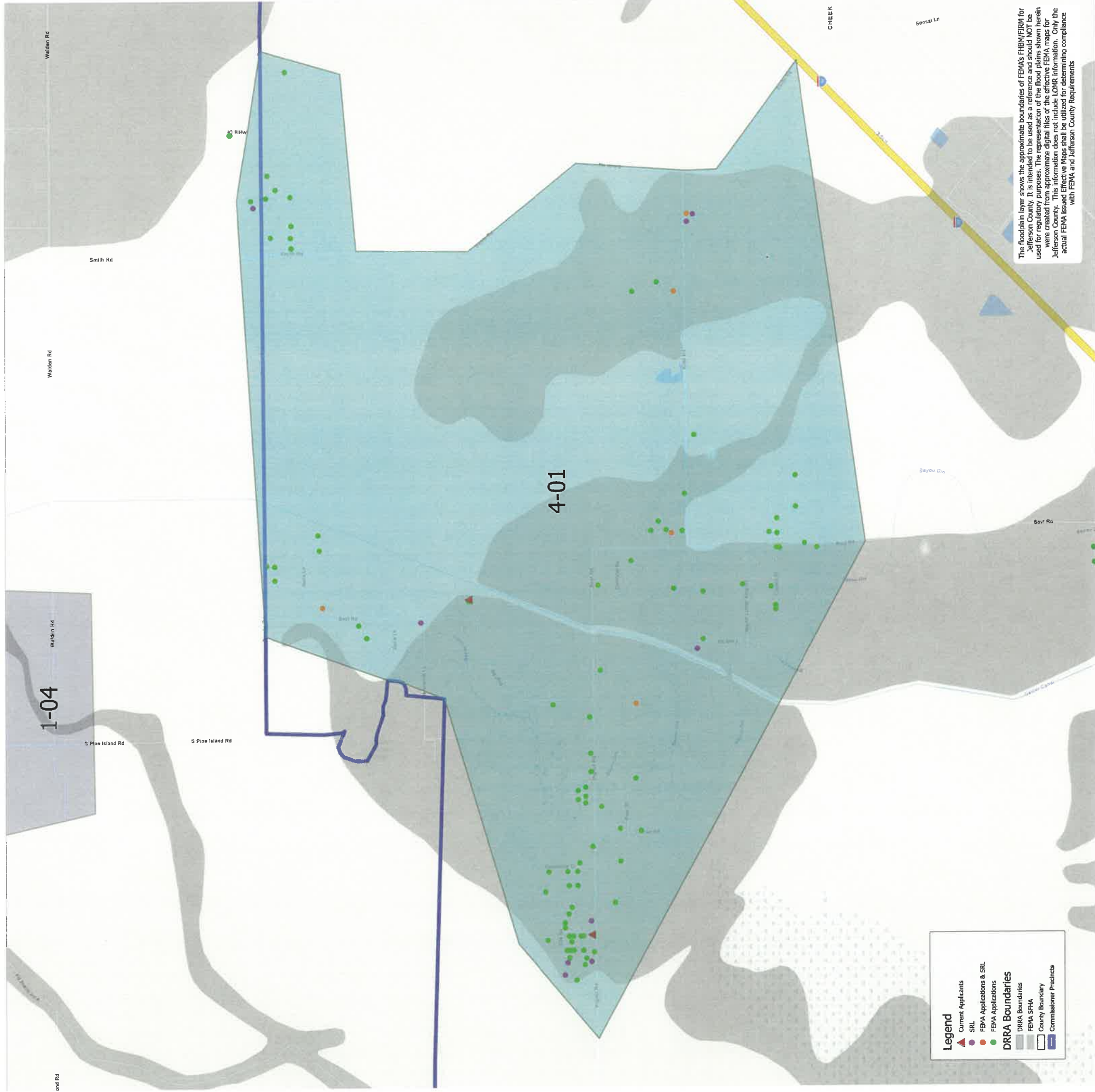
The floodplain layer shows the approximate boundaries of FEMA's FIRM/FIRM for Jefferson County. It is intended to be used as a reference and should NOT be used for regulatory purposes. The representation of the flood plains shown herein were created from approximate digital files of the effective FEMA maps for Jefferson County. This information does not include LOMR information. Only the actual FEMA issued Effective Maps shall be utilized for determining compliance with FEMA and Jefferson County Requirements



Legend

- ▲ Current Applicants
- FEMA Applications & SFH
- FEMA Applications
- DRRA Boundaries
- FEMA SFHA
- County Boundary
- Commissioner Precincts

The floodplain layer shows the approximate boundaries of FEMA's FIRM/FIRM for Jefferson County. It is intended to be used as a reference and should NOT be used for regulatory purposes. The representation of the flood plains shown herein were created from approximate digital files of the effective FEMA maps for Jefferson County. This information does not include LOMR information. Only the actual FEMA issued Effective Maps shall be utilized for determining compliance with FEMA and Jefferson County Requirements



Legend

- ▲ Current Applicants
- SRL
- FEMA Applications & SRL
- FEMA Applications

DRRA Boundaries

- DRRA Boundaries
- FEMA SFHA
- County Boundary
- Commissioner Precincts

The floodplain layer shows the approximate boundaries of FEMA's FIRM/FIRM for Jefferson County. It is intended to be used as a reference and should NOT be used for regulatory purposes. The representation of the flood plains shown herein were created from approximate digital files of the effective FEMA maps for Jefferson County. This information does not include LOMR information. Only the actual FEMA issued Effective Maps shall be utilized for determining compliance with FEMA and Jefferson County Requirements.

Whecherry Ln

Blewett Rd

Witzer Rd

Witzer Rd

Witzer Rd

Witzer Rd

Witzer Rd

Bayou De Dr

Bayou De Dr

Bayou De Dr

Blewett Rd

Prange Ave Ln
Pugh Ave Ln

4-02

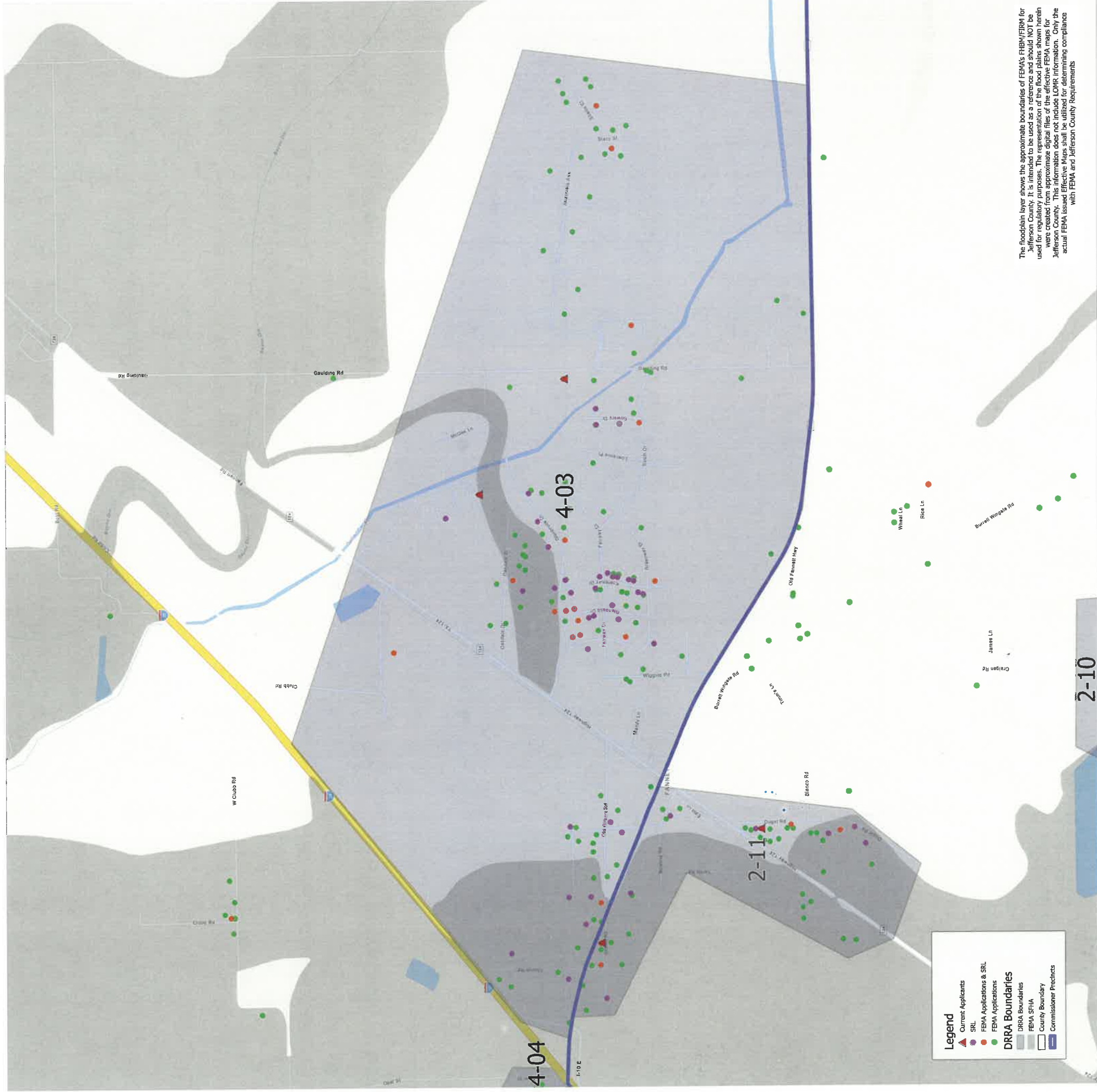
Legend

- ▲ Current Applicants
- SRL
- FEMA Applications & SRL
- FEMA Applications
- FEMA Applications

DRRA Boundaries

- DRRA Boundaries
- FEMA SFHA
- County Boundary
- Commissioner Precincts

The floodplain layer shows the approximate boundaries of FEMA's FIRM/FIRM for Jefferson County. It is intended to be used as a reference and should NOT be used for regulatory purposes. The representation of the flood plains shown herein were created from approximate digital files of the effective FEMA maps for Jefferson County. This information does not include LOMR information. Only the actual FEMA issued Effective Maps shall be utilized for determining compliance with FEMA and Jefferson County Requirements



Legend

- ▲ Current Applicants
- SRL
- FEMA Applications & SRL
- FEMA Applications

DRRA Boundaries

- DRRA Boundaries
- FEMA SFHA
- County Boundary
- Commissioner Precincts

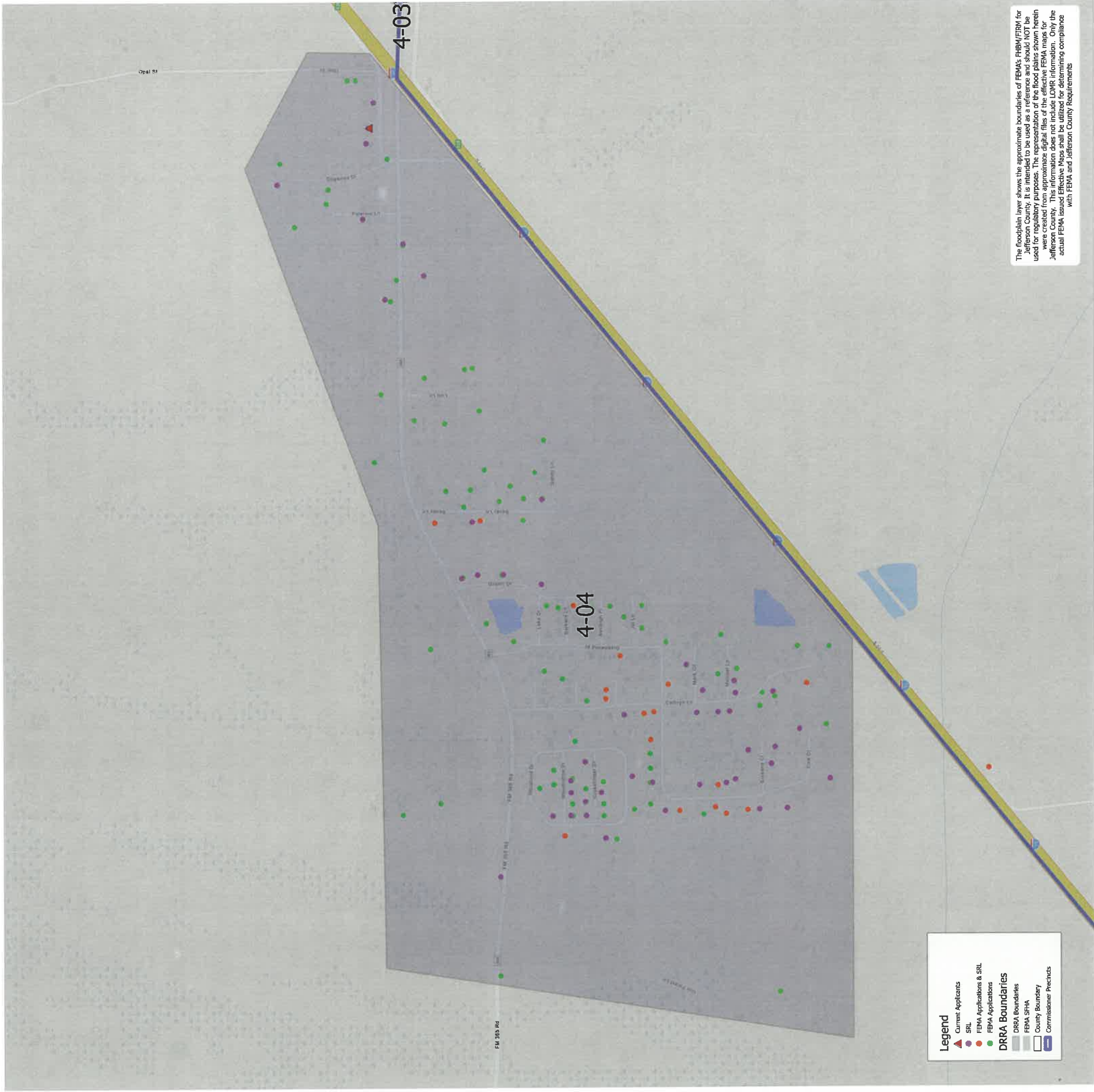
The floodplain layer shows the approximate boundaries of FEMA's FIRM/FIRM for Jefferson County. It is intended to be used as a reference and should NOT be used for regulatory purposes. The representation of the flood plains shown herein were created from approximate digital files of the effective FEMA maps for Jefferson County. This information does not include LOMR information. Only the actual FEMA issued Effective Maps shall be utilized for determining compliance with FEMA and Jefferson County Requirements.

4-04

4-03

2-11

2-10



Legend

- ▲ Current Applicants
- SFIL
- FEMA Applications & SFIL
- FEMA Applications

DRRA Boundaries

- DRRA Boundaries
- FEMA SFHA
- County Boundary
- Commissioner Precincts

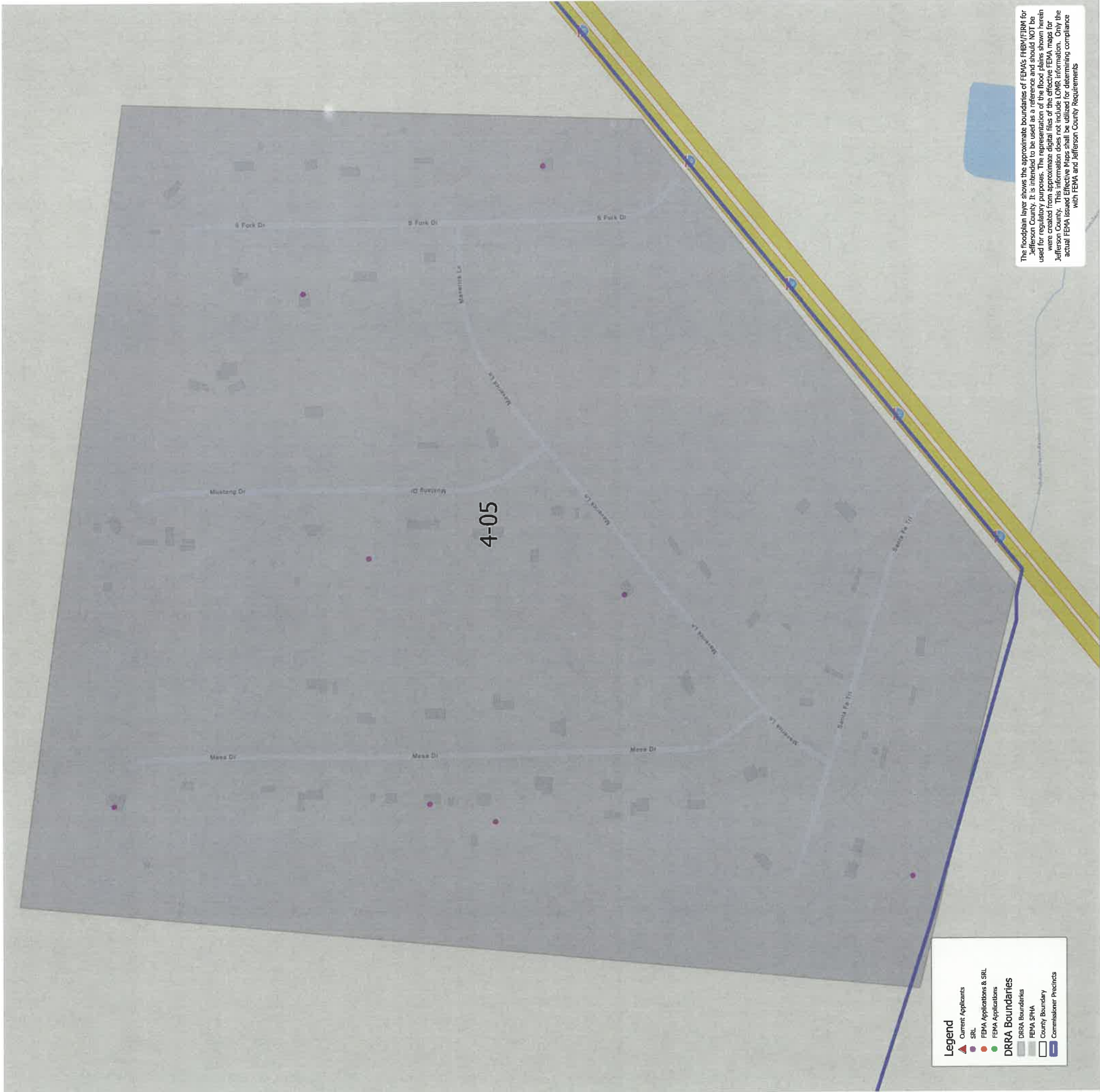
The floodplain layer shows the approximate boundaries of FEMA's FIRM/FIRM for Jefferson County. It is intended to be used as a reference and should NOT be used for regulatory purposes. The representation of the flood plains shown herein were created from approximate digital files of the effective FEMA maps for Jefferson County. This information does not include LOMR information. Only the actual FEMA Issued Effective Maps shall be utilized for determining compliance with FEMA and Jefferson County Requirements

FM 385 Rd

4-03

4-04

Opal St



Legend

- ▲ Current Applicants
- SRL
- FEMA Applications & SRL
- FEMA Applications

DRRA Boundaries

- DRRA Boundaries
- FEMA SFHA
- County Boundary
- Commissioner Precincts

The floodplain layer shows the approximate boundaries of FEMA's FIRM/FIRM for Jefferson County. It is intended to be used as a reference and should NOT be used for regulatory purposes. The representation of the flood plains shown herein were created from approximate digital files of the effective FEMA maps for Jefferson County. This information does not include LOMR information. Only the actual FEMA issued Effective Maps shall be utilized for determining compliance with FEMA and Jefferson County Requirements

4-05